

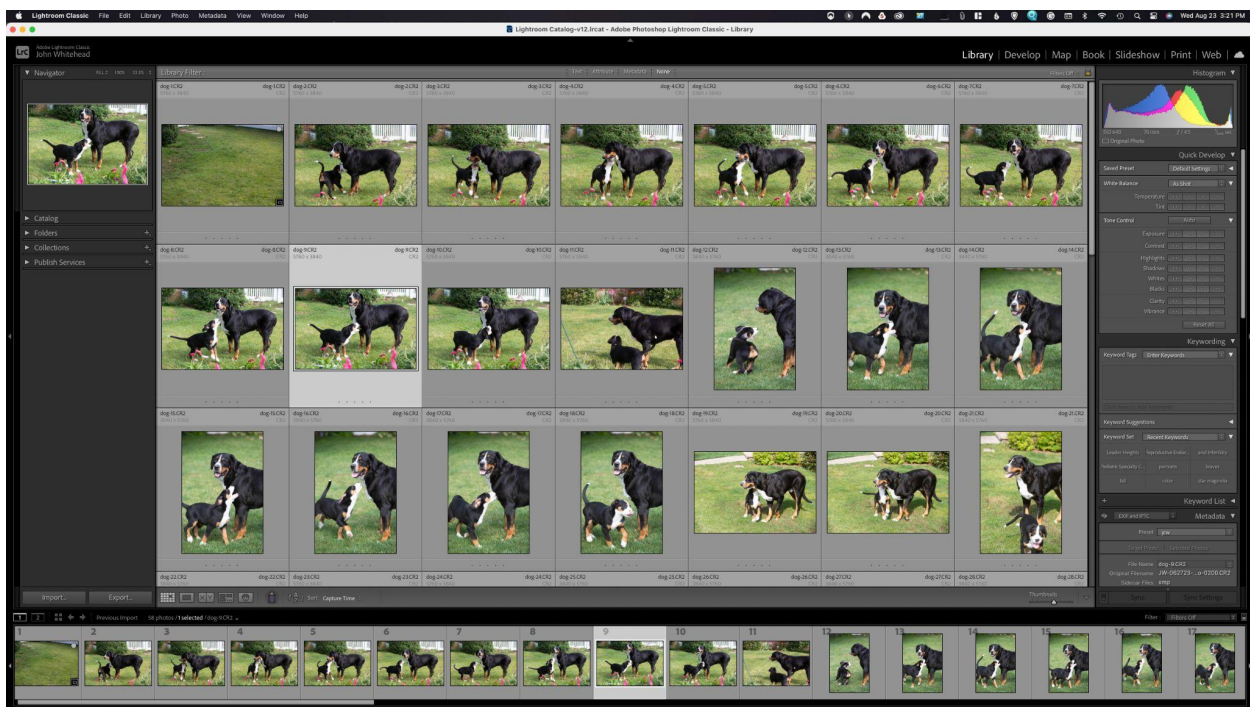
JOHN WHITEHEAD IMAGES

Library Module

Adobe Lightroom Classic

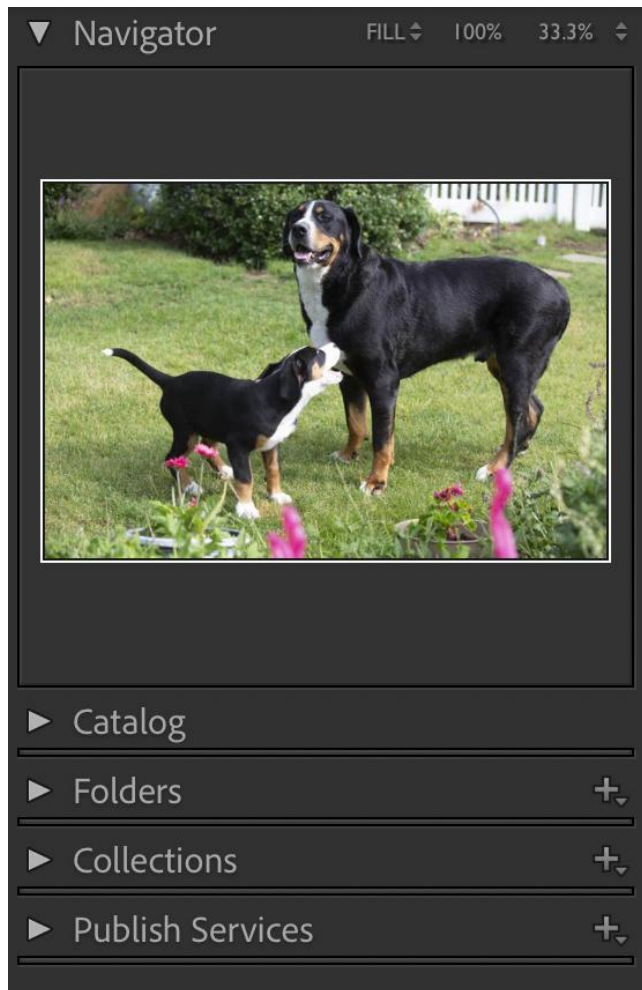
This is an overview of what is on the **Library Module** on Adobe Lightroom Classic.

View of Library Module



Once you have imported your image this is what the Library Module will look like. Library is a catalog and browser. Browser refers to "looking at your images." Cataloging is used to search and find specific images.

Navigator, Catalog, Folders, Collections, and Publishing Services



The **Navigator** is basically the image of the dogs you see to the left. Personally, I do not use it. You can use it to zoom in, and fill the screen but I use other methods we will learn later.

The **Catalog** is my love / hate relationship with Lightroom. The catalog remembers everything about your image, keywords, file name, metadata. This allows you to search and find images. The issue is you change **the path** Lightroom will not know where to look. For instance, let's say I put the dog image on my **pictures folder**. If I move the dog to the **Movies Folder**, the catalog will not know where the image exists. This is displayed by an "!" in the top right of the thumbnail. So if you constantly move folders cataloging can cause issues.



This image is an example of the exclamation mark when Lightroom cannot find the image. To get rid of this you need to point to the image's new location. [Here is a video on the process.](#)

Folder is just a way to navigate through your computer's and hard drives folders. If you select a folder that has been cataloged, you can select the contents to bring up its images.

Collections we will look at later. It allows you to add images manually or automatically. For instance if you photograph your pet every week, you can create a collection to store your favorite images. That way you do not have to look through every single folder. Note: this does not move the image, it just remembers the path.

Publishing Services is an easy way to post images on something like Facebook.

Main Window Selection

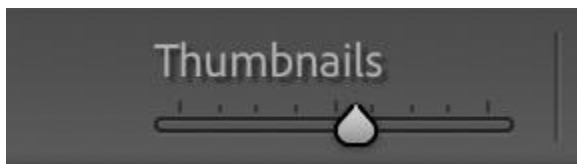


This bar allows you to switch the main preview area between grid view, single loupe view, compare view, survey view, face recognition, and to the right, sort options. Do not worry about the spray can at this point.

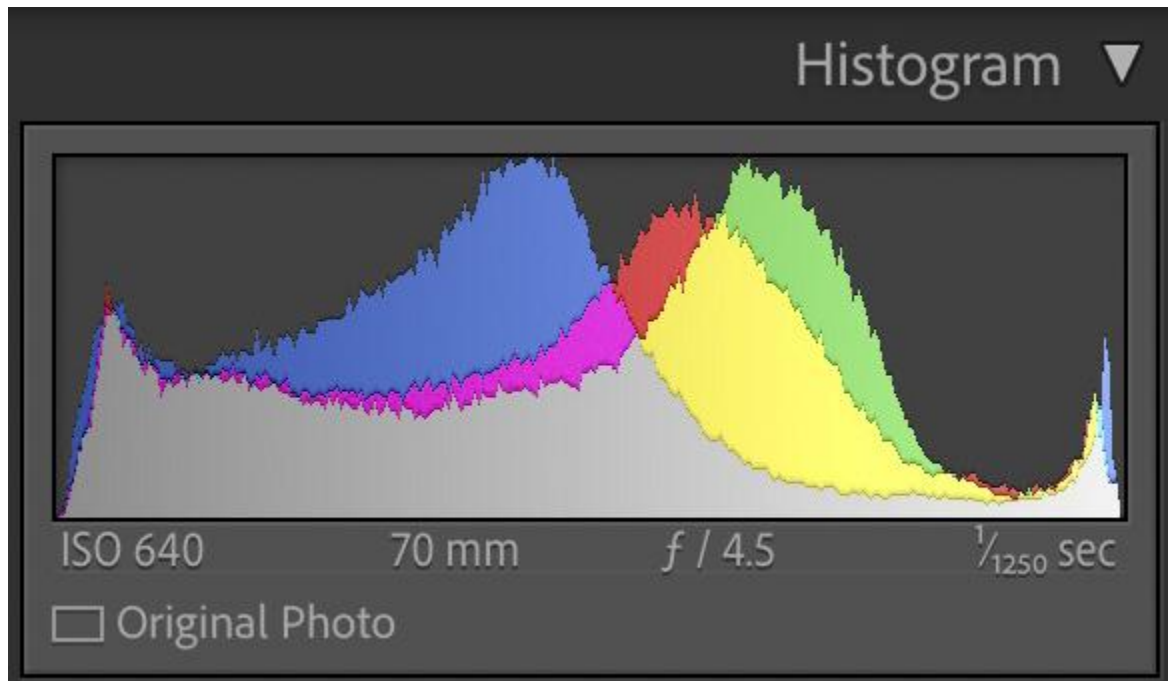
Thumbnails and Thumbnail Resize



Above is the **Thumbnail window**. If you select a thumbnail and you have the **loupe view** selected above it will display that image in the large preview window. If you want to increase or decrease the thumbnails one way is this slider below.

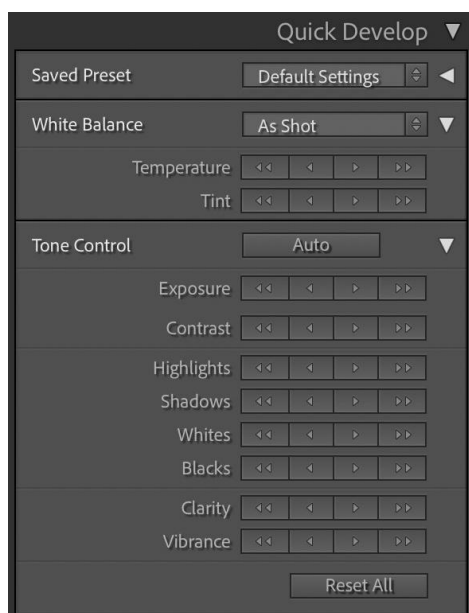


Histogram



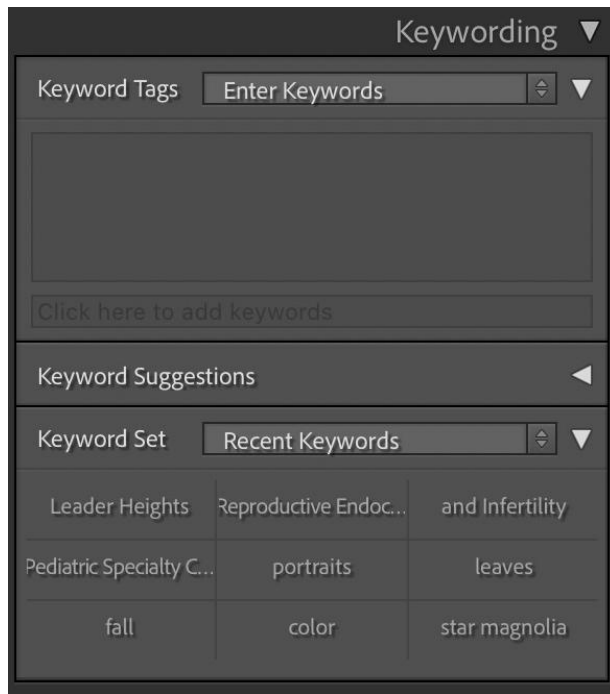
The **Histogram** is located on the top right. The red, blue, yellow, green and gray displays where the information is in your image. It also displays your cameras setting each image. These settings really help me give you feedback when learning photography.

Quick Develop



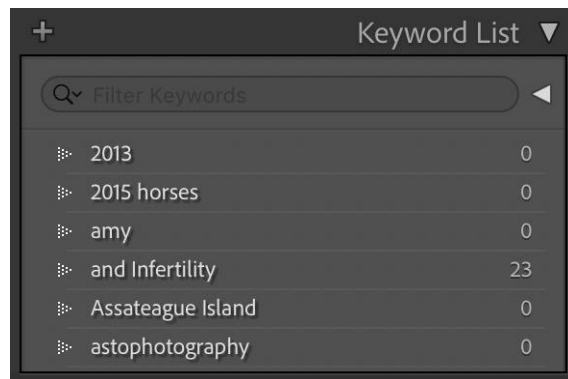
Quick Develop lets you make general adjustments to images before entering the develop module. I only find this useful for batch processing. Batch processing would be applying an adjustment to a series of images at once. I will explain all the terms in the develop module.

Keywording and Keywording List

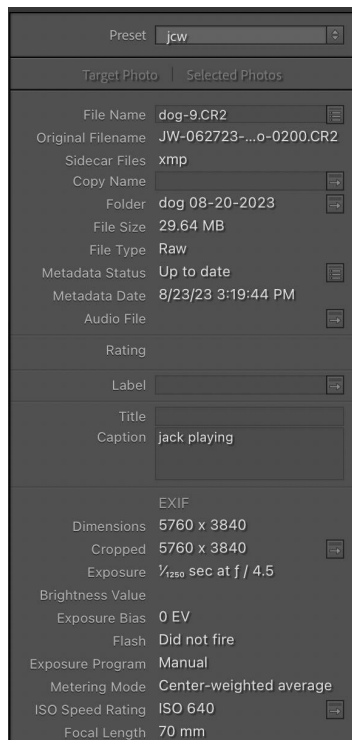


Keywording, allows you to place searchable keywords to specific images.

Keywording List allows you to select from keywords you have already used, to add to your keywords.

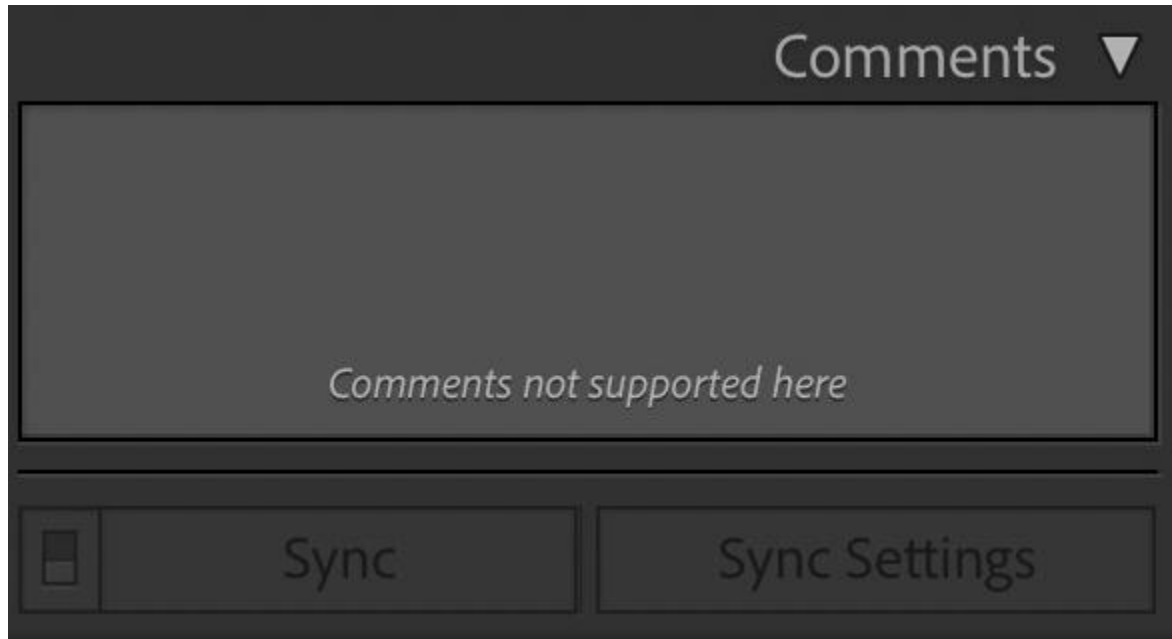


Metadata



Metadata, we filled out in the ingest or import. This is where you can access or change your metadata. This image only shows a portion of what is available.

Comments



Truthfully, I have never used comments, but it would allow you to add comments to an image.

Below is a view of the Library Module with a single preview selected.

